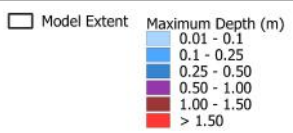


# **APPENDIX 1**

## **Friston Baseline Depth Maps**





**Title:**  
**Friston**  
**Catchment Extent - Baseline Depth - 20% AEP Rainfall Event, Maximum Depth (m)**

BMT endeavours to ensure that the information provided in this map is correct at the time of publication. BMT does not warrant, guarantee or make representations regarding the currency and accuracy of information contained in this map.

**Drawn/Check:**  
 AS \ JP

**Date of issue:**  
 12/05/2020

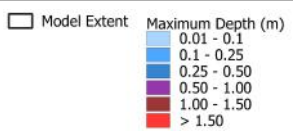
**Scale:**  
 0 50 100 150 200 m

**Drawing:**  
 A-2



**Rev:**  
 01

Filepath: U:\600574\_SCC\_Friston\_Mini\_SWMP\GIS\Workspaces\Friston\_Mapping\_Atlas.gxz



**Title:**  
**Friston**  
**Catchment Extent - Baseline Depth - 10% AEP Rainfall Event, Maximum Depth (m)**

BMT endeavours to ensure that the information provided in this map is correct at the time of publication. BMT does not warrant, guarantee or make representations regarding the currency and accuracy of information contained in this map.

**Drawn/Check:**  
 AS \ JP

**Date of issue:**  
 12/05/2020

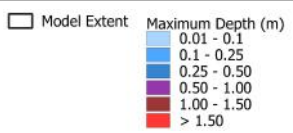
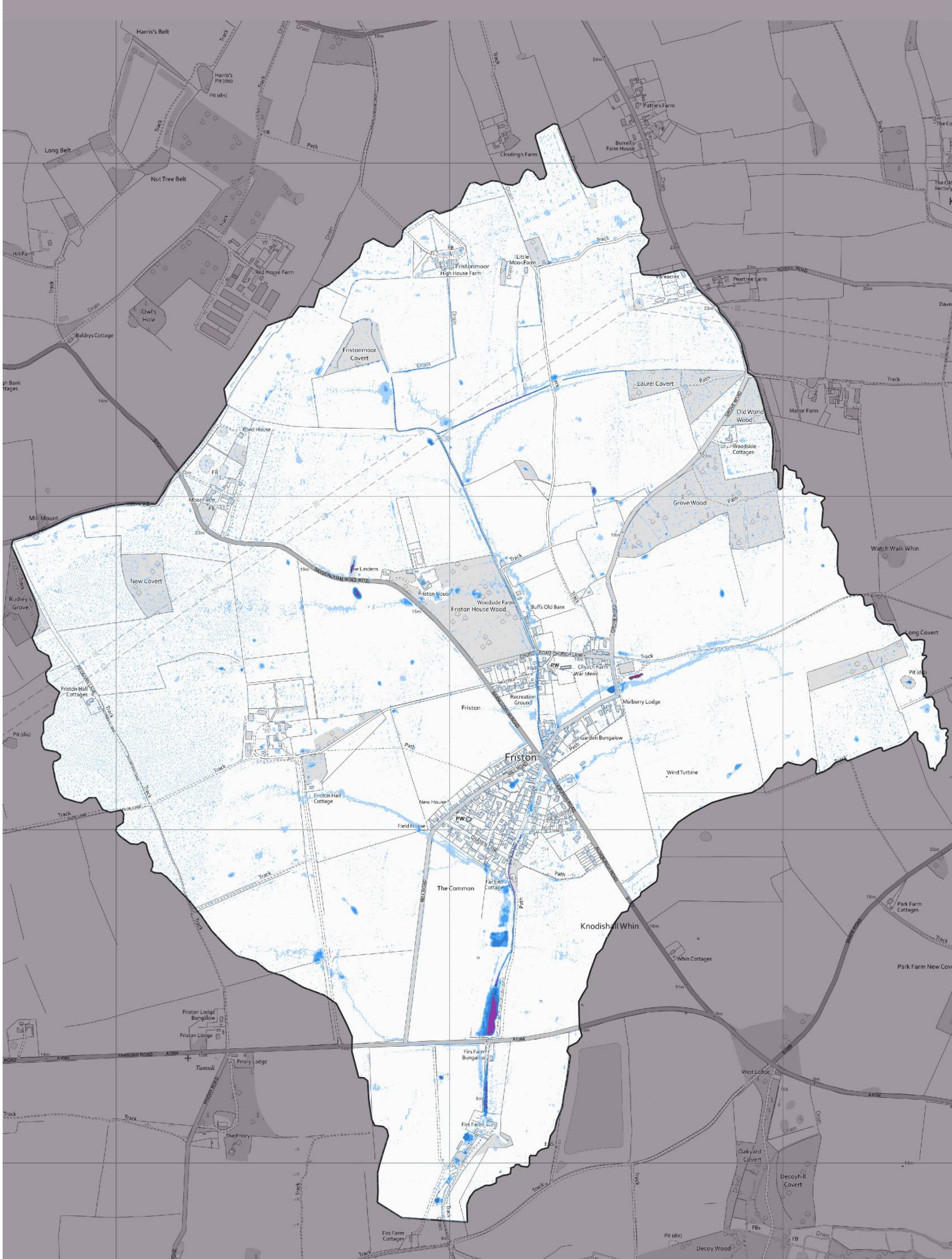
**Scale:**  
 0 50 100 150 200 m

**Drawing:**  
 A-3



**Rev:**  
 01

Filepath: U:\600574\_SCC\_Friston\_Mini\_SWMP\GIS\Workspaces\Friston\_Mapping\_Atlas.gxz



Title:  
**Friston**  
**Catchment Extent - Baseline Depth - 5% AEP Rainfall Event, Maximum Depth (m)**

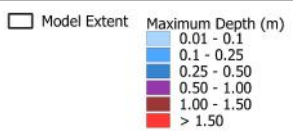
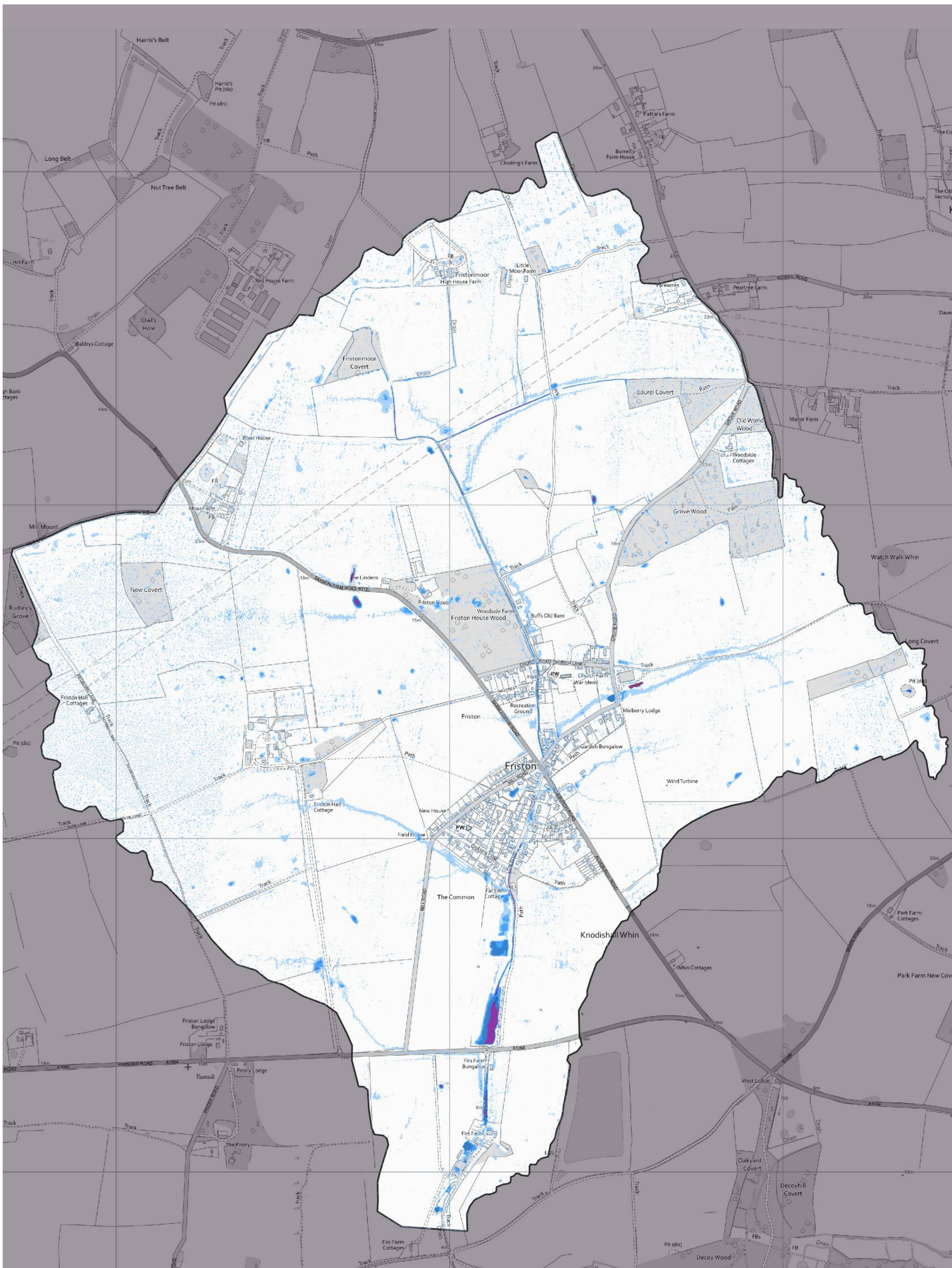
BMT endeavours to ensure that the information provided in this map is correct at the time of publication. BMT does not warrant, guarantee or make representations regarding the currency and accuracy of information contained in this map.

Drawn/Check: AS \ JP  
 Date of issue: 12/05/2020  
 Scale: 0 50 100 150 200 m

Drawing: A-4  
 Rev: 01



Filepath: U:\600574\_SCC\_Friston\_Mini\_SWMP\GIS\Workspaces\Friston\_Mapping\_Atlas.gxz



Title:  
**Friston Catchment Extent - Baseline Depth - 3.33% AEP Rainfall Event, Depth**

BMT endeavours to ensure that the information provided in this map is correct at the time of publication. BMT does not warrant, guarantee or make representations regarding the currency and accuracy of information contained in this map.

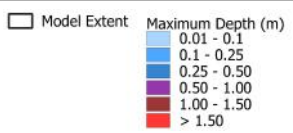
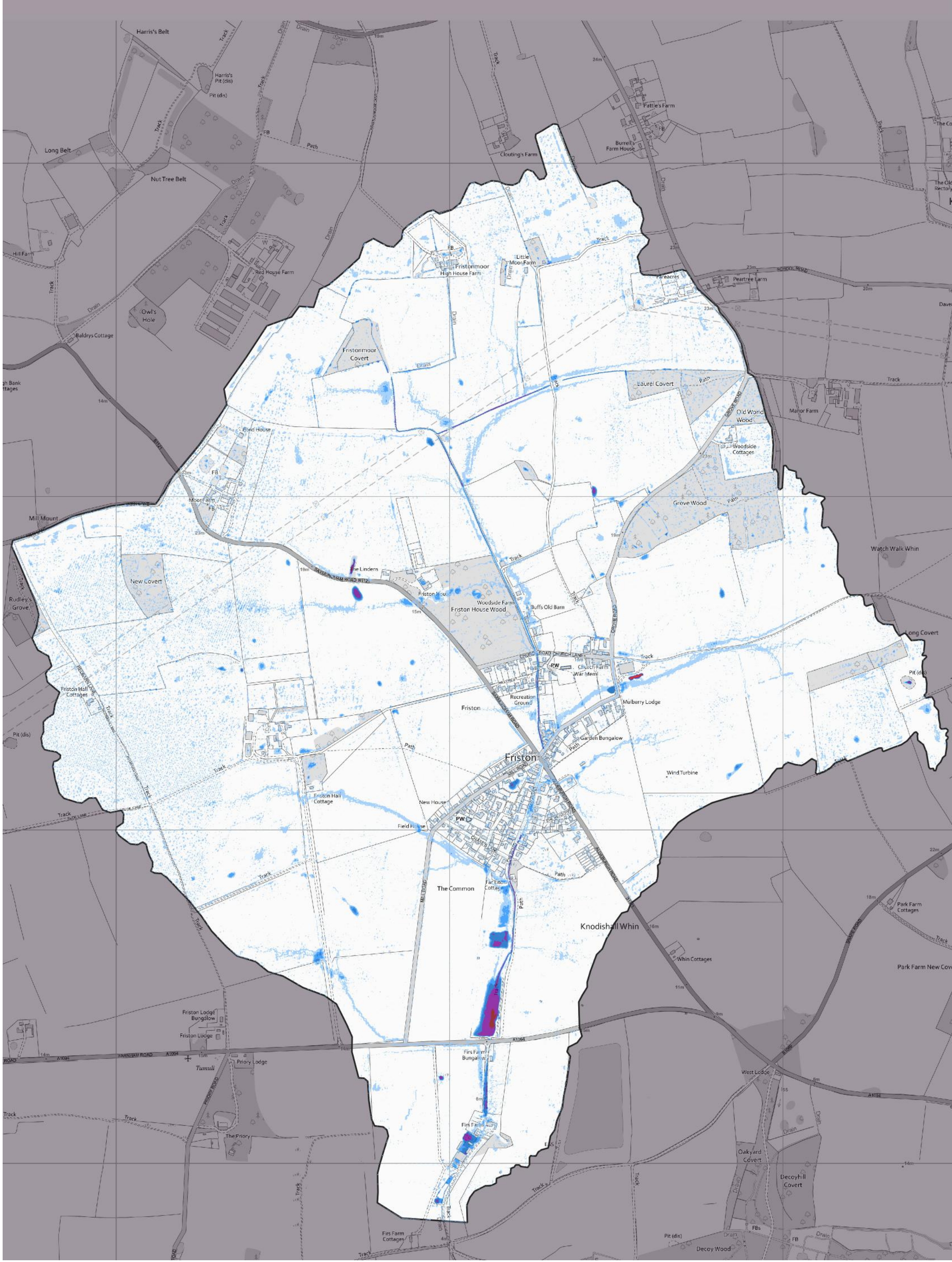
Drawn/Check:	Scale:
AS \ JP	0 50 100 150 200 m
Date of issue:	
12/05/2020	

Drawing:  
 A-5

Rev:  
 01



Filepath: U:\600574\_SCC\_Friston\_Mini\_SWMP\GIS\Workspaces\Friston\_Mapping\_Atlas.gxz



Title:  
**Friston Catchment Extent - Baseline Depth - 1.33% AEP Rainfall Event, Maximum Depth**

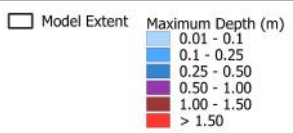
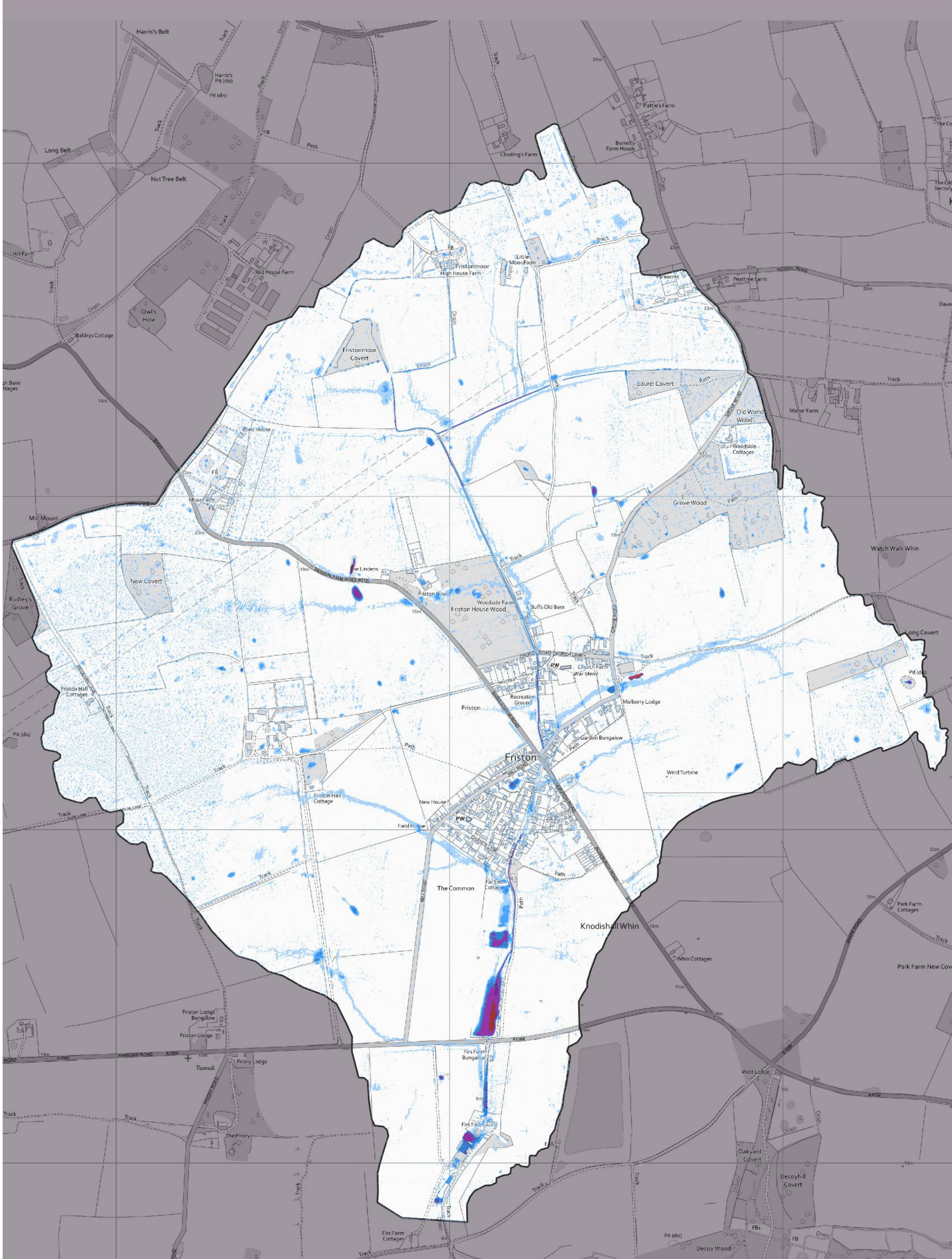
BMT endeavours to ensure that the information provided in this map is correct at the time of publication. BMT does not warrant, guarantee or make representations regarding the currency and accuracy of information contained in this map.

Drawn/Check: AS \ JP  
 Date of issue: 12/05/2020  
 Scale: 0 50 100 150 200 m

Drawing: A-6  
 Rev: 01



Filepath: U:\600574\_SCC\_Friston\_Mini\_SWMP\GIS\Workspaces\Friston\_Mapping\_Atlas.gxz



Title:  
**Friston**  
**Catchment Extent - Baseline Depth - 1% AEP Rainfall Event, Maximum Depth (m)**

BMT endeavours to ensure that the information provided in this map is correct at the time of publication. BMT does not warrant, guarantee or make representations regarding the currency and accuracy of information contained in this map.

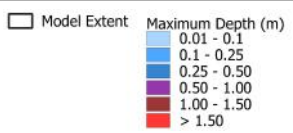
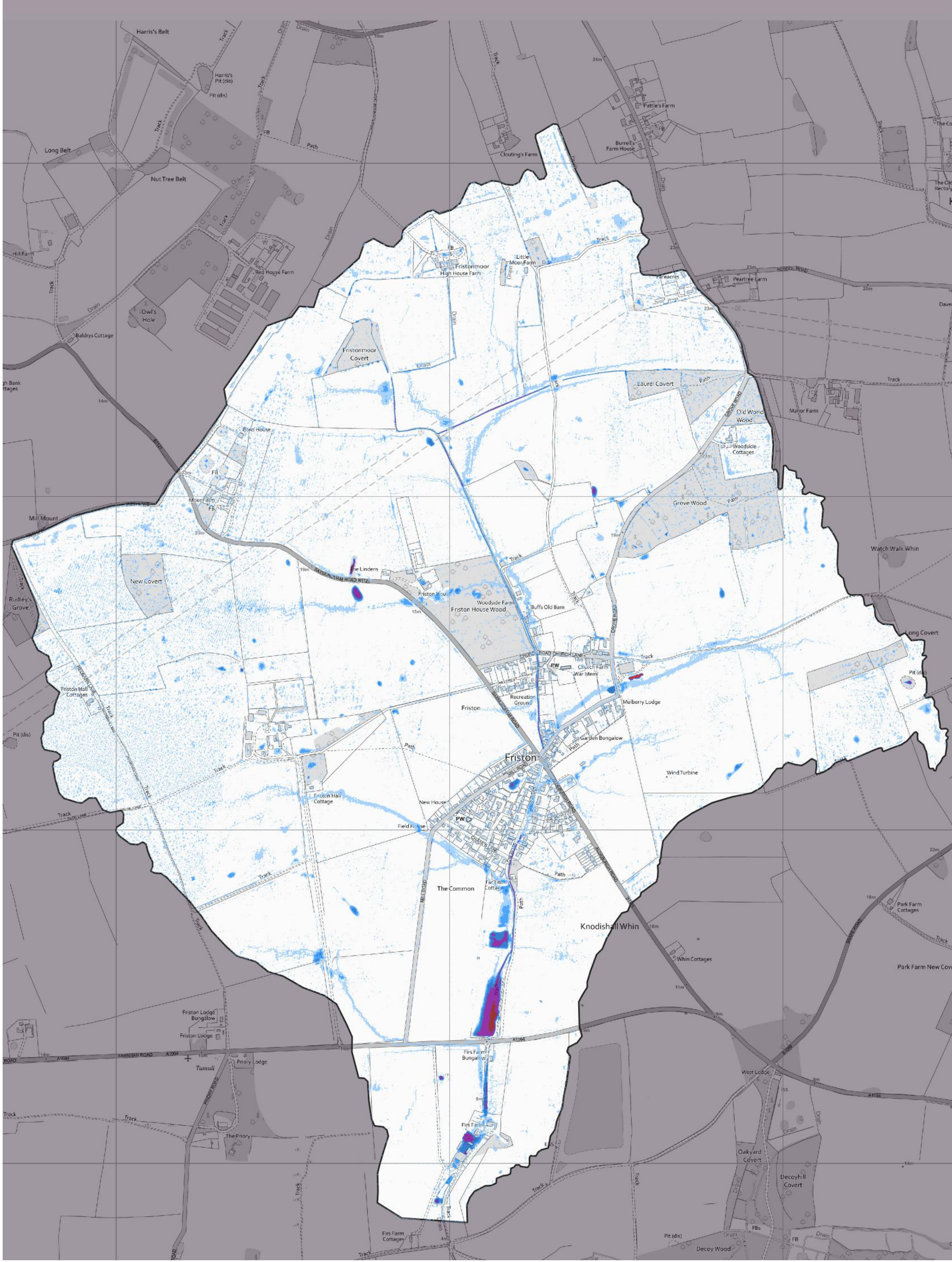
Drawn/Check: AS \ JP  
 Date of issue: 12/05/2020  
 Scale: 0 50 100 150 200 m

Drawing: A-7  
 Rev: 01



Filepath: U:\600574\_SCC\_Friston\_Mini\_SWMP\GIS\Workspaces\Friston\_Mapping\_Atlas.gxz





**Title:**  
**Friston**  
**Catchment Extent - Baseline Depth - 1% AEP CCL Rainfall Event, Maximum Depth**

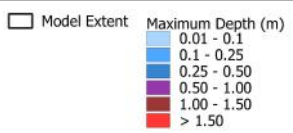
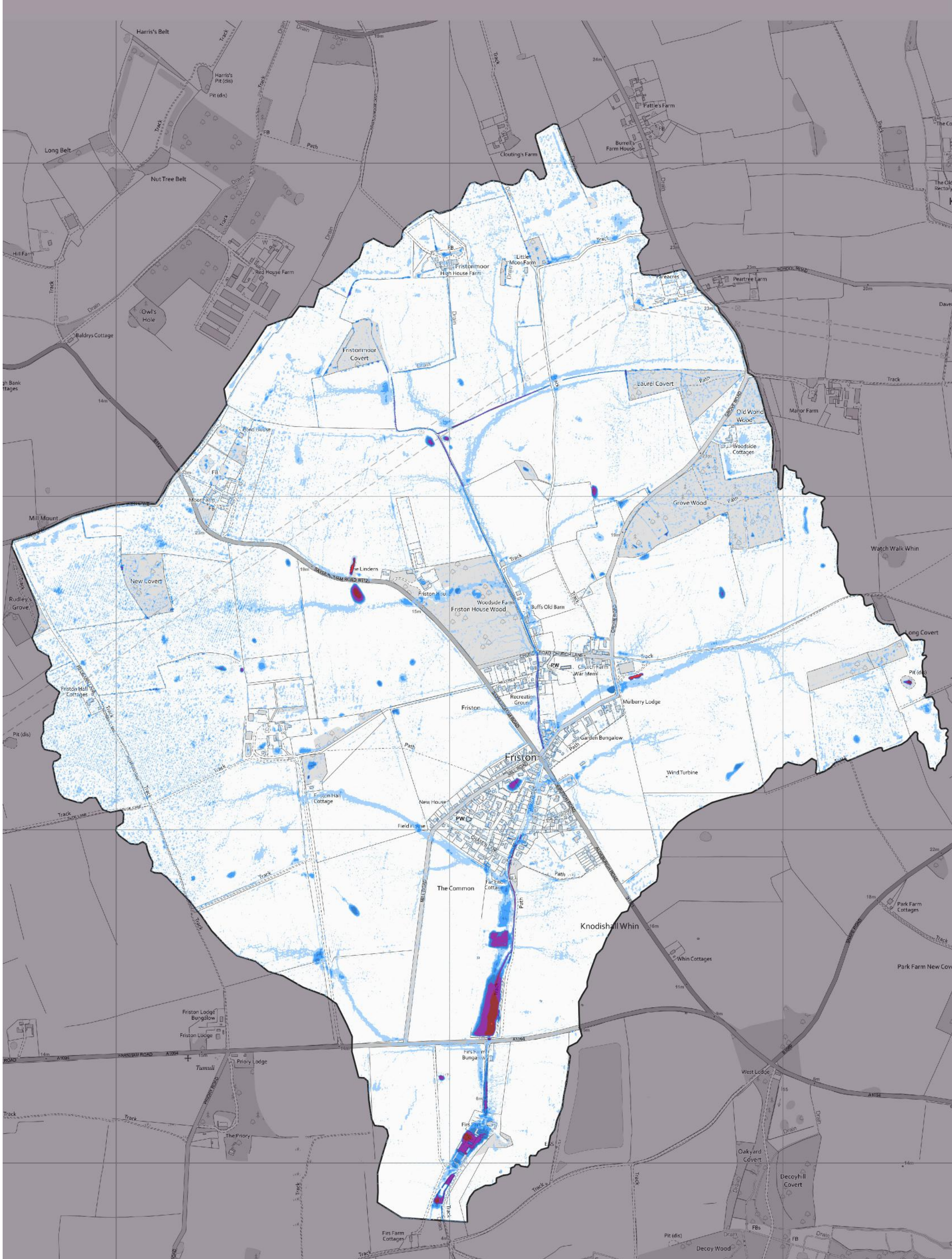
BMT endeavours to ensure that the information provided in this map is correct at the time of publication. BMT does not warrant, guarantee or make representations regarding the currency and accuracy of information contained in this map.

Drawn/Check: AS \ JP  
 Date of issue: 12/05/2020  
 Scale: 0 50 100 150 200 m

Drawing: A-8  
 Rev: 01



Filepath: U:\600574\_SCC\_Friston\_Mini\_SWMP\GIS\Workspaces\Friston\_Mapping\_Atlas.gxz



**Title:**  
**Friston**  
**Catchment Extent - Baseline Depth - 1% AEP CCU Rainfall Event, Maximum Depth**

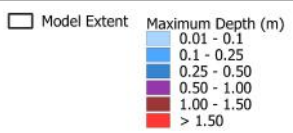
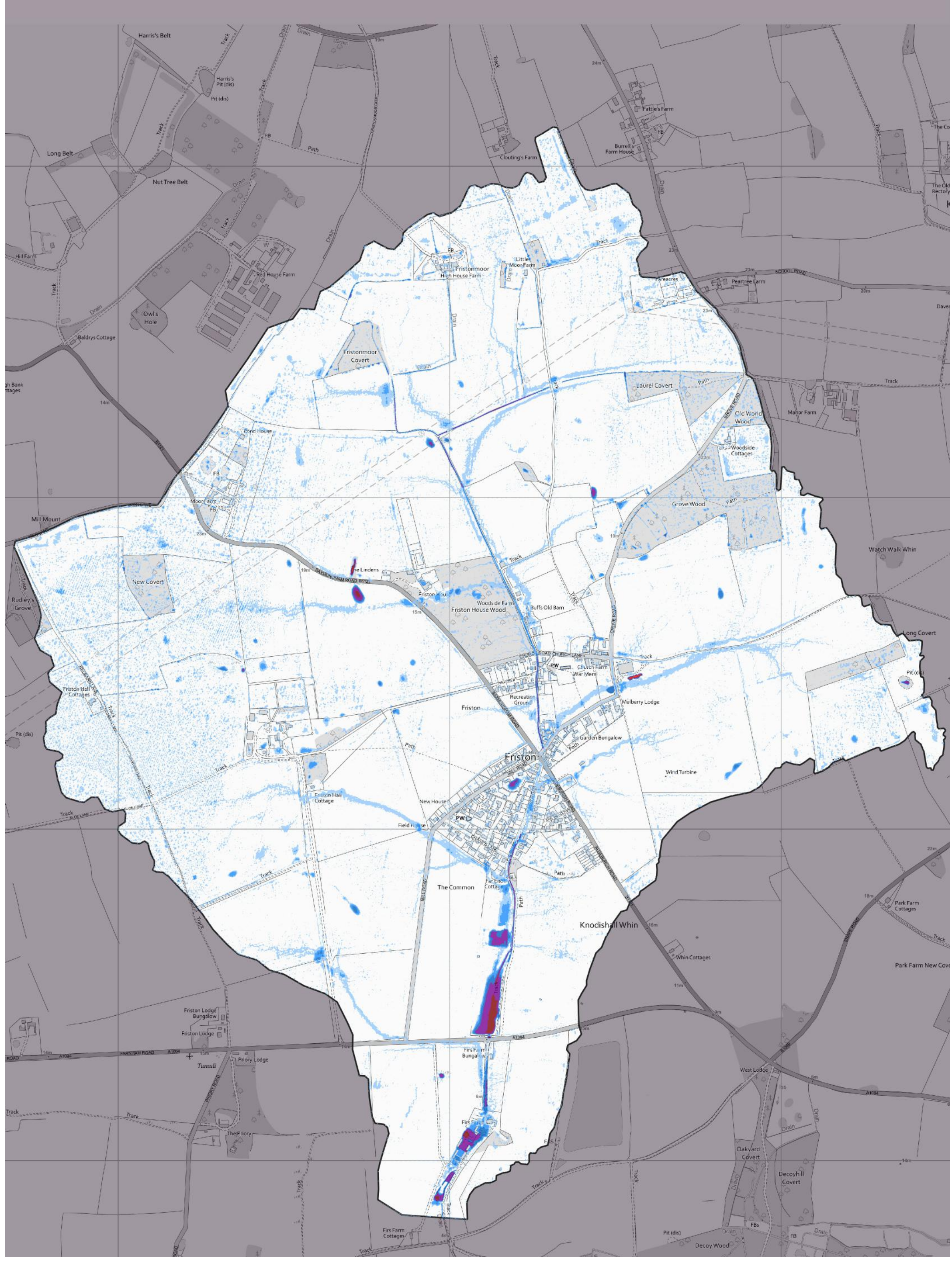
BMT endeavours to ensure that the information provided in this map is correct at the time of publication. BMT does not warrant, guarantee or make representations regarding the currency and accuracy of information contained in this map.

Drawn/Check: AS \ JP  
 Date of issue: 12/05/2020  
 Scale: 0 50 100 150 200 m

Drawing: A-9  
 Rev: 01



Filepath: U:\600574\_SCC\_Friston\_Mini\_SWMP\GIS\Workspaces\Friston\_Mapping\_Atlas.gxz



**Title:**  
**Friston**  
**Catchment Extent - Baseline Depth - 0.5% AEP Flood Event, Maximum Depth (m)**

BMT endeavours to ensure that the information provided in this map is correct at the time of publication. BMT does not warrant, guarantee or make representations regarding the currency and accuracy of information contained in this map.

Drawn/Check: AS \ JP  
 Date of issue: 12/05/2020  
 Scale: 0 50 100 150 200 m

Drawing: A-10  
 Rev: 01



Filepath: U:\600574\_SCC\_Friston\_Mini\_SWMP\GIS\Workspaces\Friston\_Mapping\_Atlas.gxz



## **APPENDIX 2**

### **Flood event 6<sup>th</sup> October 2019 in Friston**



Photograph 1



Photograph 2



Photograph 3



Photograph 4



Photograph 5



Photograph 6





Photograph 7



Photograph 8



Photograph 9



Photograph 10

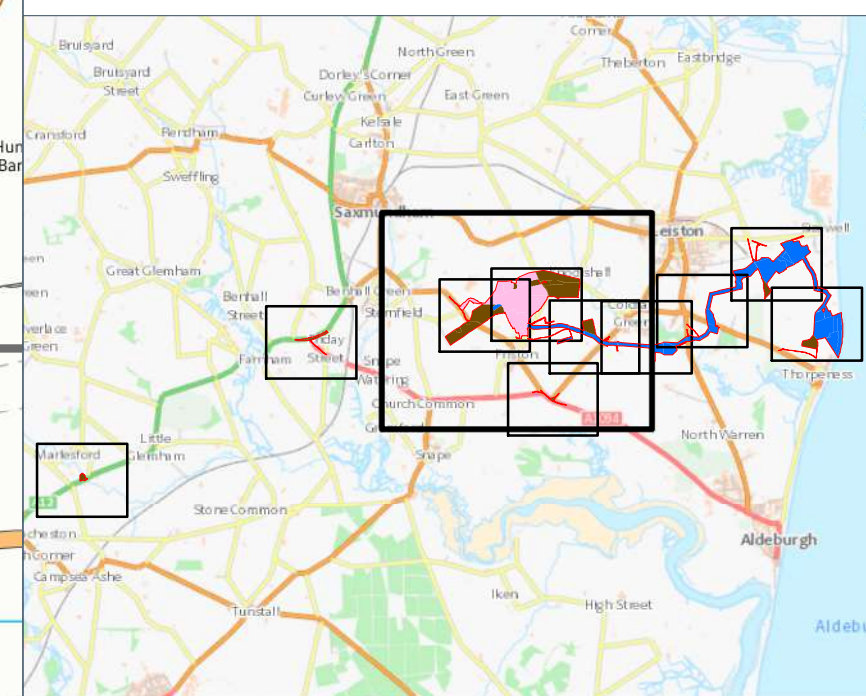
## **APPENDIX 3**

### **SPR Land Occupation Plans for Friston**

- Key:**
- Order Limits
  - Land Subject to Temporary Occupation and Use and Freehold Acquisition
  - Land Subject to Temporary Occupation and Use and Acquisition of Permanent Rights
  - Land Subject to Temporary Occupation and Use

**APFP Ref: 5(2)(i)**

**PINS Document Reference: 2.2**



Coordinate System: British National Grid  
 Projection: Transverse Mercator  
 Datum: OSGB 1936

**Location:**  
 Lands at Knodishall, Friston and Blackheath Corner, Suffolk.

**Coords:** 641,270 260,872

**Project Name:**  
 East Anglia ONE North Offshore Wind Farm

**Drawing Name:**  
 Land Plans

**Drawing No:** 180476\_PLN\_DCO\_1820.3

Rev	Date	Description
-	07.10.2019	First Issue

<b>Drawn:</b>	PR
<b>Approved:</b>	HH
<b>Sheet No:</b>	3 of 13
<b>Sheet Size:</b>	A1



The information contained in this document is confidential and protected by copyright. The use, copying or disclosure to a third party, either wholly or in part, except with the written permission of, and in the manner prescribed by Scottish Power Renewables constitutes an infringement of copyright. Dalcour Maclaren does not warrant that this document is definitive nor free of error and does not accept liability for any loss caused or arising from reliance upon information provided herein. Although our best efforts have been made to ensure the accuracy of these plans, all measurements must be confirmed on site. BASED UPON THE ORDNANCE SURVEY MAP WITH THE SANCTION OF THE CONTROLLER OF H.M. STATIONERY OFFICE. CROWN COPYRIGHT RESERVED. © OS LICENCE No. 100031673

